



ClearSight Application Note 2005-002

Product(s): ClearSight Analyzer **Version:** 4.1.3
ClearSight Distributed **Version:** 4.1.3

Title: ClearSight Features of Application Flows in Real Time Analysis

ClearSight provides the ability to monitor Application flows in real time, or to save the flows to a trace file for post-analysis viewing. ClearSight also provides the ability to optimize performance of the application by adjusting the number of nodes and flows available for real time analysis. These adjustments can be made by selecting the Monitor Settings option on the Global Settings tab under the Configuration Screen. These settings affect how many servers and flows will be shown in the Applications Monitoring Summary (Figure 1) as well as how fast nodes and flows are aged out. The smaller the value, the faster age out occurs.

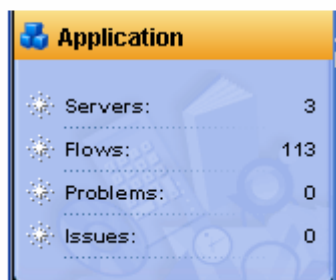


Figure 1. Application Monitor Summary

As a general rule, in version 4, Server nodes can be set from 0 to 500 and flows can be set from 0 2000. This limitation will be removed in version 5 and the user will be able to set any desired number with the understanding of resources that are necessary to support higher values. The number of flows can be a bit misleading though, as the setting is the cumulative value of all sub-flows that pass through the network card(s) being monitored, including both network cards when using the Full-Duplex option.

In figure 2, the decode view of an SIP call is shown. The SIP call contains 1 major flow and 4 sub-flows. The major flow is a virtual flow and doesn't exist; ClearSight combines the sub-flows into this virtual flow to give the user an overview of the communications that took, or is taking, place for the call. The major flow is not used in the calculation of flows. The 4 sub-flows are the real communications that take place to establish a call; the corresponding packets that make up a flow can be seen by clicking on each of the sub-flows.





ClearSight Application Note 2005-002

Another one of the features that ClearSight provides when monitoring application flows is the ability to switch between an application flow message view, decode summary and transportation flow summary by right-clicking in the lower section that contains the ladder diagram is displayed. You can also swap the display positions of clients and servers by right-clicking on the ladder diagram.

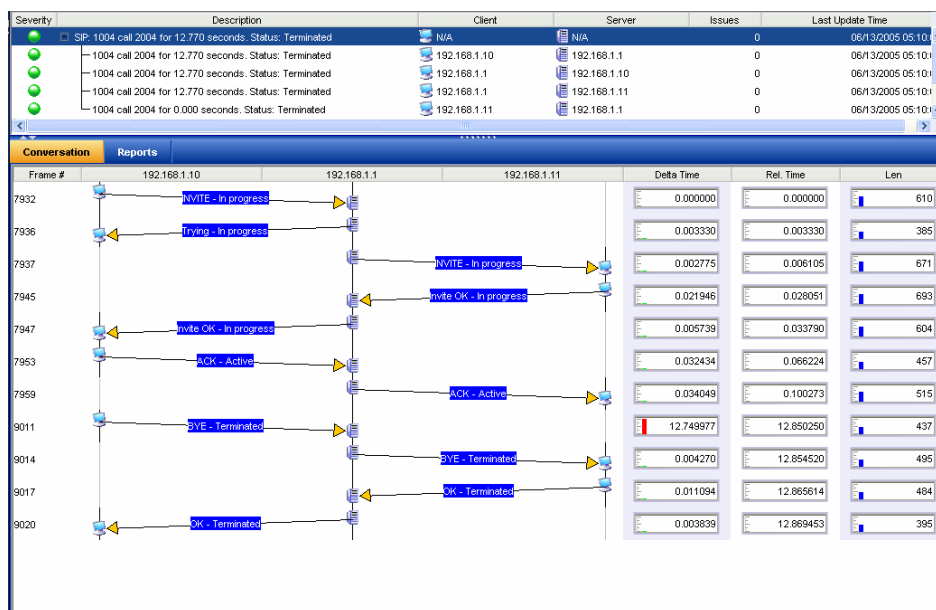


Figure 2. SIP Call Showing Ladder Diagram and Sub-flows

